



INTRODUCTION

Yale Sustainability Strategic Plan 2013-2016

President Salovey announced Yale's continued commitment to sustainability when he released the University's second Sustainability Strategic Plan 2013-2016 one year ago. In his announcement he recognized Yale's long-standing and on-going efforts to address sustainability and called upon students, faculty, and staff to play an active role in doing more. He noted that the challenge is not technology, but rather changing our behaviors to match and amplify new technologies.

In the first year of implementing Yale's second strategic plan we focused on developing leadership opportunities and increasing the capacity of individuals and departments to make sustainable choices in their every day decisions. Throughout this report, there is evidence of these efforts. From Green Certification programs to individualized professional school Sustainability Action Plans, Yale's community of students, staff, and faculty are taking on the President's challenge to "ensure that sustainable practices are at the heart of our university."

This year's Progress Report provides a snapshot of the important advancements that Yale has made toward achieving the sustainability goals laid out in the university's three-year strategic plan. You can follow Yale's progress toward fulfilling the action items in its strategic plan on our website.

We are confident that our current and future progress will continue to maintain Yale's status as a leader in sustainability for institutions of higher education, and to ensure the longevity and health of our campus, community, and world.



we have achieved our goal



we are on track to meet our goal



we can do better

These icons, which you will see throughout the report, are a visual representation of Yale's progress toward achieving the goals set in the Sustainability Strategic Plan 2013-2016. The baseline for each goal is fiscal year 2013.

- # MATERIALS MANAGEMENT

- ## NATURAL & BUILT ENVIRONMENT

- CAPACITY BUILDING
- & LEADERSHIP

- Establish departmental & professional school Sustainability Action Plans.
- Promote sustainability as a core business value.
- Create a regional food alliance.
- Create sustainable ITS training & certification programs.
- Expand campus green certification programs.

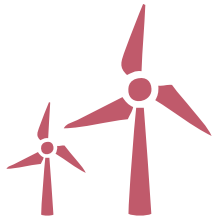
- ## - FOOD & WELL-BEING

- Ensure that 37% of dining purchases meets sustainability criteria.
- Increase plant-based foods served in dining halls by 15%.
- Reduce sodium-content of dining-hall food offerings.
- Reduce the use of cleaning chemicals by 30%.
- Promote human well-being & ecosystem vitality.



ENERGY & GHG EMISSIONS

RENEWABLE ENERGY PORTFOLIO



0.094%

of the electricity generated on campus is from renewable energy.

4.79% FROM 2013 LEVELS



FLEET EMISSIONS

This year we have increased emissions by

34.12%

Additional strategies to reduce greenhouse gas emissions from Yale's vehicle fleet are currently under review.



GREENHOUSE GAS EMISSIONS

We recognize that our emissions reductions will likely not be a linear path downward over the course of the goal, but rather a combination of increases and decreases leading to an overall net reduction in emissions.

2014
3.38%

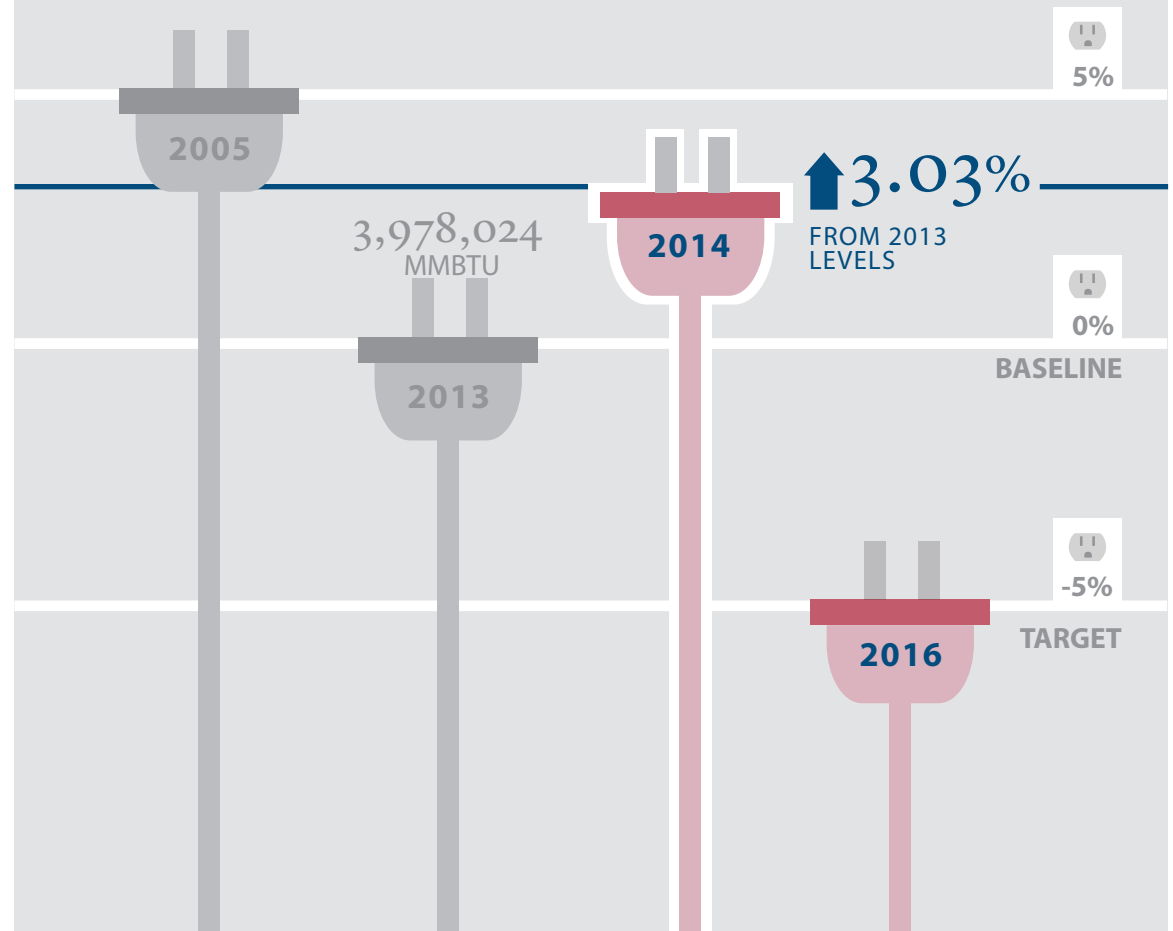
2013



ENERGY CONSUMPTION



Yale's energy consumption increased slightly this year; however the University's three year projection is on target to meet the 5% reduction target. In fiscal year 2014, New England experienced a colder than average winter when compared to recent winters which increased our demand for heating. If our steam consumption during the winter months was normalized for average weather, then it would have been approximately 5% lower than previous years due to our proactive energy initiatives to improve efficiency.



LEADERSHIP & CAPACITY BUILDING

REGIONAL FOOD ALLIANCE

Yale is currently working with regional manufacturers, suppliers, and growers to increase purchasing power that promotes sustainable and healthy initiatives.



GREEN CERTIFICATION PROGRAMS



OUR SCOREBOARD OF PARTICIPANTS:



1,600
WORKPLACE
PARTICIPANTS



15,736
GREEN EVENT
PARTICIPANTS



407
GREEN LABS
CERTIFIED

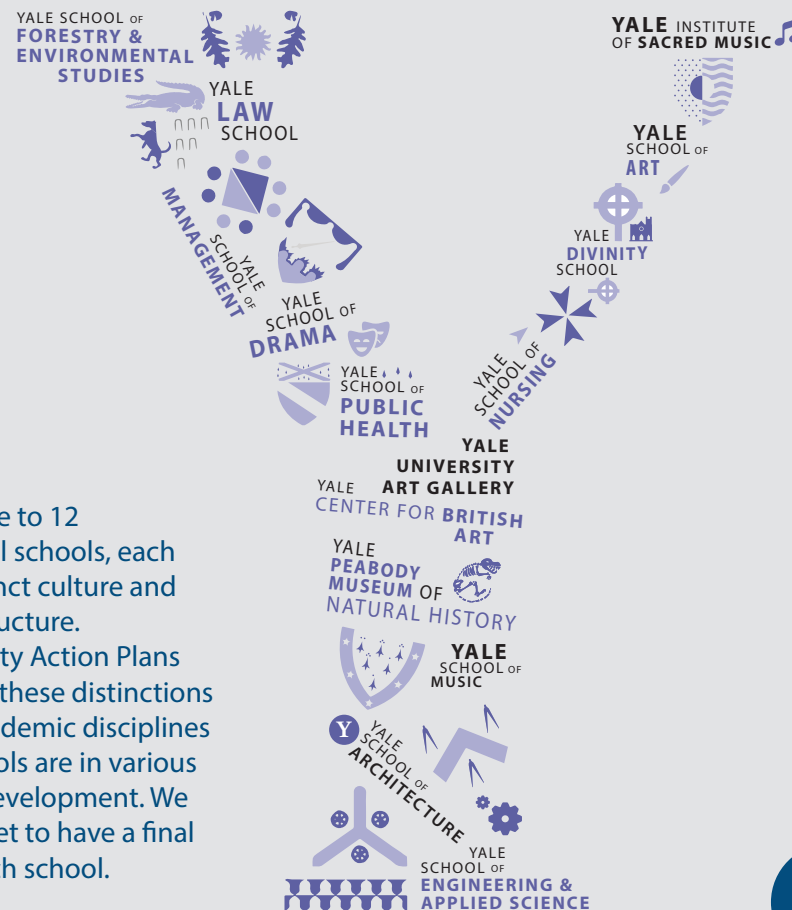
Utilized as a key tool to engage employees and students, participation in Yale's green certification programs continues to increase.

SUSTAINABLE INFORMATION TECHNOLOGY SERVICES

Supplier sustainability practices and ratings have become a standard part of the evaluation process for new source selections and for existing suppliers with ongoing business that can be enhanced or optimized.



SUSTAINABILITY ACTION PLANS



Yale is home to 12 professional schools, each with a distinct culture and physical structure. Sustainability Action Plans that reflect these distinctions and the academic disciplines of the schools are in various stages of development. We are on-target to have a final plan for each school.

FOOD & WELL-BEING

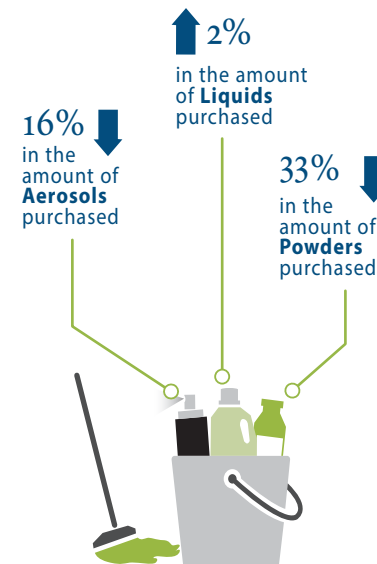
SODIUM CONTENT, PLANT-BASED FOOD & SUSTAINABLE SOURCING

Yale Dining is currently developing a method to calculate the average sodium consumption per student per day.

Yale dining has increased its **PLANT BASED FOOD** served by **9%**

37%
SUSTAINABLY SOURCED: local, eco-sensitive, fair, or humane.

CLEANING CHEMICALS



Aerosol and powder-based cleaning product purchases have been significantly reduced, however, the total volume of cleaning chemical purchases have increased by 1%.

PROMOTE WELL-BEING

We have laid the groundwork for increased collaboration between well-being and sustainability initiatives university-wide.



NATURAL & BUILT ENVIRONMENT

CAMPUS PLANNING

All Yale staff and external consultants have been trained on how to use the **Sustainability Supplement** to the **Framework for Campus Planning**.



RAIN GARDENS

Rain gardens and vegetated ground cover in place of mulch have been deployed across campus leading to a reduction in stormwater runoff, soil erosion, and maintenance.



 **30,600**

GROUND COVER PLANTS have been planted in place of mulch to increase water infiltration and reduce stormwater runoff.



LEED BUILDING CERTIFICATION

LEED SCORE BOARD TO DATE



PLATINUM



GOLD



SILVER

LEED NEW CONSTRUCTION & RENOVATIONS

2

5

2

LEED LABS

1

11

Yale's portfolio of Leadership in Energy & Environmental Design (LEED) certified buildings and spaces continues to grow.



POTABLE WATER



In 2014, Yale increased its potable water consumption by

↑ 2%



2013



LAND MANAGEMENT



7 Urban Meadows

covering **50,000** gross square feet were created across campus in fiscal year 2014.

They are designated areas where grasses are allowed to grow, and are only cut



2 times per year

to promote natural regeneration of grasses & wildflowers.

Benefits:



+ Supports Biodiversity



+ Improves Water Quality



+ Reduces stormwater runoff



+ Prevents soil erosion

WHERE ARE OUR URBAN MEADOWS?



MATERIALS MANAGEMENT

SUSTAINABLE PROCUREMENT STANDARDS have been developed for the most commonly used break-room supplies.



TOTAL MATERIALS

↓ **66**
TONS OF
MATERIALS



Yale reduced the total amount of municipal solid waste, recycled materials, and organics leaving campus by 1%.



WASTE DIVERSION



PAPER PURCHASES

Yale's three-year paper reduction goal was 10%. Within the first year, we exceeded this target by 6%. Efforts to maintain this success are essential in the coming years.

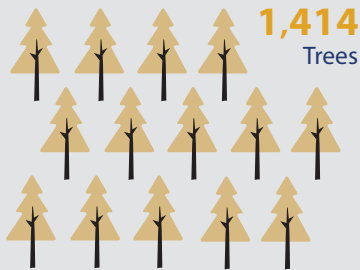
16%
↓ FROM 2013 LEVELS

=

SAVED
30,941
reams



What we actually saved:



32,250
Gallons of oil



3,400,000
kWh of Energy



594,100
Gallons of water



OFFICE SUPPLIES PROCUREMENT



Office supply purchases have decreased by

10% ↓ FROM 2013 LEVELS



Yale Office of Sustainability

<http://sustainability.yale.edu>



Let's make Yale better
together



Made from recycled materials.